

# VC-A50PN IP PTZ Camera with NDI®

**Lumens®**  
We Make Your Job Easier

The Lumens® VC-A50PN HD Pan/Tilt/Zoom (PTZ) IP camera is equipped with a professional 1/2.8 inch image sensor with Full HD 1080p output at 60 fps. It's powered by Power over Ethernet (PoE+), an economical and easy integration solution. The superior 20x optical zoom lens, excellent white balance, and exposure mode delivers a clear image, even in low light or the extreme contrast of brightness and darkness in a lecture hall.

The VC-A50PN has Ethernet, HDMI, and 3G-SDI outputs that are simultaneously active. It supports live broadcasting with H.264 format with latency of less than 120ms. The camera covers wide shooting angles and achieves high-speed, quiet, and precise positioning with smooth PTZ operations.

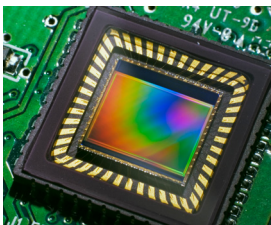
The VC-A50PN is an applicable solution for lecture recording, videoconferencing, and live broadcasting applications.

## Key Features

- Full HD 1080p signal output format with a high frame rate of 60 fps
- 20x optical zoom
- Supports live broadcasting
- Supports Power Over Ethernet (PoE+)
- Supports NDI® technology for NDI-based video production
- Ethernet low latency ( < 120 ms)
- Ethernet, HDMI, and 3G-SDI synchronous image outputs
- Maximum horizontal/vertical speed of rotation: 120 degrees/second
- Audio input supports AAC encoding



## More Details



### Image Quality

The VC-A50PN is equipped with a professional 1/2.8 inch image sensor with Full HD 1080p output resolution. The sensor provides high color reproduction, high-definition signals, and crystal-clear image quality.



### Ethernet Interface

The VC-A50PN supports H.264 video compression format that can reduce the bandwidth for transmitting video. This technology can decrease hard disk space when recording.

### Easy Installation

Powered by PoE+ (Power over Ethernet) allowing a cost-effective and simple installation.



### Supports NDI® Technology

The VC-A50PN can connect directly to a NDI® network, utilizing NDI-based video production workflows without additional configuration, reducing cost and set-up time.



## Wide Range Pan/Tilt/Zoom Action

The VC-A50PN has a wide shooting area (pan angle from -170° to +170°; tilt angle from -30° to +90°), as well as quiet, fast, and precise positioning movements.



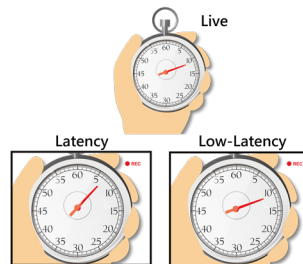
## Multiple Signal Interface Formats

The VC-A50PN is able to switch video output formats to Full HD for compatibility in various display devices.



## Audio Input Support

The VC-A50PN has a stereo audio input with AAC encoding transmission through the Internet, SDI and HDMI extending the distance of an audio device. This enhances sound quality while reducing installation cost.



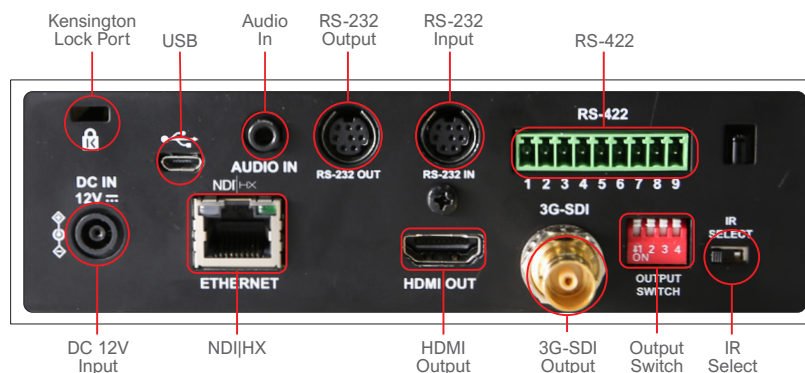
## Ethernet Low-Latency

The VC-A50PN supports low-latency and the fast response time is less than 120 ms that allows unnoticeable delays between a live image and its output on the screen.

## Product Specifications

<b>Sensor</b>	1/2.8" 2.41MP CMOS	<b>WDR</b>	Yes
<b>Video Format</b>	1080p : 60 / 59.94 / 50 / 30 / 29.97 / 25 1080i : 60 / 59.94 / 50 720p : 60 / 59.94 / 50	<b>3D NR</b>	Yes
<b>Video Output (HD) Interface</b>	3G-SDI / HDMI / Ethernet	<b>Image Flip</b>	Yes
<b>Optical Zoom</b>	20x	<b>Preset Positions</b>	128
<b>Horizontal Viewing Angle</b>	57°	<b>Multiple Video Stream</b>	1080p 60 / 640x360p 30 *HDMI/SDI output 1080i60 NDI streams 1080p30
<b>Vertical Viewing Angle</b>	32.1°	<b>Audio Compression Format</b>	AAC
<b>Diagonal Viewing Angle</b>	65.4°	<b>Control Interface</b>	RS-232 / RS-422 / Ethernet
<b>Panning Angle</b>	+170° ~ -170°	<b>Control Protocol</b>	VISCA / PELCO D / NDI
<b>Panning Speed</b>	120°/sec	<b>Tally Light</b>	Yes
<b>Tilting Angle</b>	+90° ~ -30°	<b>PoE</b>	PoE+ (IEEE802.3at)
<b>Tilting Speed</b>	120°/sec	<b>Video Stream</b>	NDI HX
<b>Aperture</b>	F1.6~F3.8	<b>Video Compression</b>	H.264
<b>Focal Length</b>	5.33mm~110mm	<b>Audio Input</b>	Line In / MIC In (Phone Jack 3.5mm x1)
<b>Shutter Speed</b>	1/1 ~ 1/10,000 sec	<b>Audio Output</b>	Ethernet / SDI / HDMI
<b>Minimum Object Distance</b>	1.5m (Wide/Tele)	<b>IR Pass-through</b>	Yes
<b>Video S/N Ratio</b>	> 50dB	<b>IR Receiver</b>	Yes
<b>Minimum Illumination</b>	1.0 lux (F1.6, 50IRE, 30fps)	<b>IR Remote Control</b>	Yes
<b>Focus System</b>	Auto / Manual	<b>Power Consumption</b>	PoE : 17.5W DC In : 16W
<b>Gain Control</b>	Auto / Manual	<b>Weight</b>	4.4lbs (2 kg)
<b>White Balance</b>	Auto / Manual	<b>Dimensions</b>	6.9" x 7.3" x 7.3" (174 x 186 x 187 mm)
<b>Exposure Control</b>	Auto / Manual		

## I/O CONNECTIONS



**Lumens**<sup>®</sup>  
We Make Your Job Easier  
www.MyLumens.com

Lumens Integration, Inc.  
4116 Clipper Court  
Fremont, CA, 94538  
Phone: +1-866-600-0988  
Fax: +1-510-252-1389

Lumens Europe  
De Nayerstraat 17 9470  
Denderleeuw Belgium  
Phone: +32-473-58-38-95  
Fax: +32-2-452-76-00

