

# VC-A50P IP PTZ Camera

**Lumens**<sup>®</sup>  
We Make Your Job Easier

The Lumens<sup>®</sup> VC-A50P HD Pan/Tilt/Zoom (PTZ) IP camera is equipped with a professional 1/2.8 inch image sensor with Full HD 1080p output at 60 fps. It's power supplied through the Power over Ethernet (PoE+) providing an economical and easy solution. The superior 20x optical zoom lens, excellent white balance, and exposure mode delivers a clear image even in low light or the extreme contrast of brightness and darkness in a lecture hall.

The VC-A50P has different interfaces like Ethernet, HDMI, and 3G-SDI. It supports live broadcasting with MJPEG, H.264 supports SVC format and further more its low-latency is less than 120ms. These features not only allow for simultaneous image outputs, they also result in the best image quality and is compatible with all video equipment. The camera covers a wide shooting angle and achieves high-speed, quiet, and precise positioning with smooth PTZ operations.

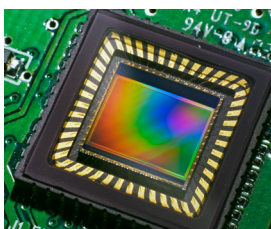
The VC-A50P is applicable for lecture recording, videoconferencing, and live broadcasting.

## Key Features

- Full HD 1080p signal output format with a high frame rate of 60 fps
- Supports live broadcasting (MJPEG, H.264 supports SVC)
- Supports PoE+ (Power Over Ethernet) using network cables supply power
- Supports ONVIF protocol
- Supports SRT (Secure Reliable Transport) protocol that optimizes streaming performance
- Ethernet low latency ( < 120 ms)
- Ethernet, HDMI, and 3G-SDI synchronous image outputs
- Audio input supports AAC encoding with 44.1/48 K sampling frequency
- Free Lumens VMS software for controlling the cameras remotely



## More Details



### Image Quality

The VC-A50P is equipped with a professional 1/2.8 inch image sensor with Full HD 1080p output resolution. The sensor provides high color reproduction, high-definition signals, and crystal-clear image quality.



### Ethernet Interface

The VC-A50P MJPEG, H.264 supports SVC video compression format that can reduce the bandwidth for transmitting video. This technology can decrease hard disk space when recording.

### Easy Installation

Power supplied through the PoE+ (Power over Ethernet) without additional power supply and cables that bring cost-effective and simple installation.



### Wide Range Pan/Tilt/Zoom Action

The VC-A50P has a wide shooting area (pan angle from -170° to +170° ; tilt angle from -30° to +90°), as well as quiet, fast, and precise positioning movements.



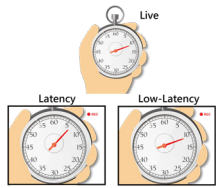
## Multiple Signal Interface Formats

The VC-A50P is able to switch video output formats to Full HD for compatibility in various display devices.



## Audio Input Support

The VC-A50P supports stereo audio input and AAC encoding transmission through the Internet, SDI and HDMI to extend the distance of the audio device. Through this transmission, sound quality is enhanced and installation costs are reduced.



## Ethernet Low-Latency

The VC-A50P supports low-latency and the fast response time is less than 120 ms that allows human-unnoticeable delays between live image and its output on the screen.



## RS-232 / RS-422 Remote Control

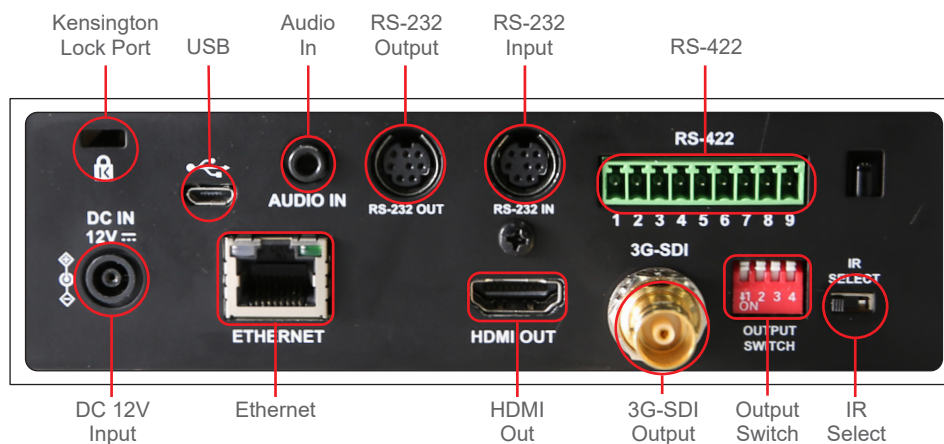
The camera's settings and PTZ control functions can be performed remotely at any location and at high communication speeds via the RS-232 / RS-422 interface.

## Product Specifications

<b>Sensor</b>	1/2.8" 2.41MP CMOS
<b>Video Format</b>	1080p : 60 / 59.94 / 50 / 30 / 29.97 / 25 1080i : 60 / 59.94 / 50 720p : 60 / 59.94 / 50
<b>Video Output (HD) Interface</b>	3G-SDI / HDMI / Ethernet
<b>Optical Zoom</b>	20x
<b>Horizontal Viewing Angle</b>	57°
<b>Vertical Viewing Angle</b>	32.1°
<b>Diagonal Viewing Angle</b>	65.4°
<b>Panning Angle</b>	+170° ~ -170°
<b>Panning Speed</b>	120°/sec
<b>Tilting Angle</b>	+90° ~ -30°
<b>Tilting Speed</b>	120°/sec
<b>Aperture</b>	F1.6 ~ F3.8
<b>Focal Length</b>	5.33mm~110mm
<b>Shutter Speed</b>	1/1 ~ 1/10,000 sec
<b>Minimum Object Distance</b>	1.5m (Wide / Tele)
<b>Video S/N Ratio</b>	> 50dB
<b>Minimum Illumination</b>	1.0 lux (F1.6, 50IRE, 30fps)
<b>Focus System</b>	Auto / Manual
<b>Gain Control</b>	Auto / Manual

<b>White Balance</b>	Auto / Manual
<b>Exposure Control</b>	Auto / Manual
<b>WDR</b>	Yes
<b>3D NR</b>	Yes
<b>Image Flip</b>	Yes
<b>Preset Positions</b>	128
<b>Control Interface</b>	RS-232 / RS-422 / Ethernet
<b>Control Protocol</b>	VISCA / PELCO D / ONVIF
<b>Tally Light</b>	Yes
<b>PoE</b>	PoE+ (IEEE802.3at)
<b>Video Stream</b>	RTSP / RTMP / MPEG-TS / SRT
<b>Video Compression</b>	MJPEG / H.264 SVC
<b>Audio Input</b>	Line In / MIC In
<b>Audio Output</b>	Ethernet / SDI / HDMI
<b>IR Pass-through</b>	Yes
<b>IR Receiver</b>	Yes
<b>IR Remote Control</b>	Yes
<b>Power Consumption</b>	PoE : 17.5W DC In : 16W
<b>Weight</b>	4.4 lbs (2 kg)
<b>Dimensions</b>	6.9" x 7.3" x 7.3" (174 x 186 x 187 mm)

## I/O CONNECTIONS



**Lumens**<sup>®</sup>  
We Make Your Job Easier  
www.MyLumens.com

Lumens Integration, Inc.  
4116 Clipper Court  
Fremont, CA, 94538  
Phone: +1-866-600-0988  
Fax: +1-510-252-1389

Lumens Europe  
De Nayerstraat 17 9470  
Denderleeuw Belgium  
Phone: +32-473-58-38-95  
Fax: +32-2-452-76-00

